

FMD DBC-3 BLK

30.0" x 23.3" x 11.3"
(76.2cm x 59.2cm x 28.7cm)



Servers and airpots sold separately

- Each mixing chamber has independent powder to water ratio
- Easy-to-program, one-touch portion control for 3 cup sizes
- Simple setup and hopper throw calibration system
- System setup is password protected for safety
- Adjustable legs and drip tray accommodate 20oz (.59L) mugs easily
- Electrical and plumbing components easily accessible through front and top
- High speed heavy-duty whipper for complete product mixing
- Improved automatic rinsing of whipper reduces run-on after beverage is dispensed
- Large easy-to-fill translucent hoppers hold 4lb (1.81kg) of product each, ensuring quick and timely refilling
- Lighted front graphics for merchandising are easy to exchange: cappuccino or soup
- Variable speed motors allow control of product consistency in mixing chamber (.75 to 6.6 grams of powder per second)

Agency:



Specifications

Product #: 29250.0000

Finish: Black

Hoppers: Three

Door: Lit

Door: Side Hinge

Dispense: Portion Control

Water Access: Plumbed

Additional Features

DBC

Electrical & Capacity

Volts	Amps	Watts	Cord Attached	Plug Type	8oz cups/hr 236ml cups/hr	Input H ₂ O Temp.	Phase	# Wires plus Ground	Hertz
120	15	1800	Yes	NEMA 5-15P	83	60°F (15.5°C)	1	2	60

Plumbing Requirements

PSI	kPa	Fitting Supplied	Water Flow Required (GPM)
20-90	138-621	1/4" Male Flare Fitting	-

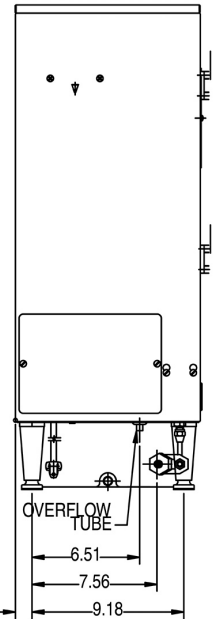
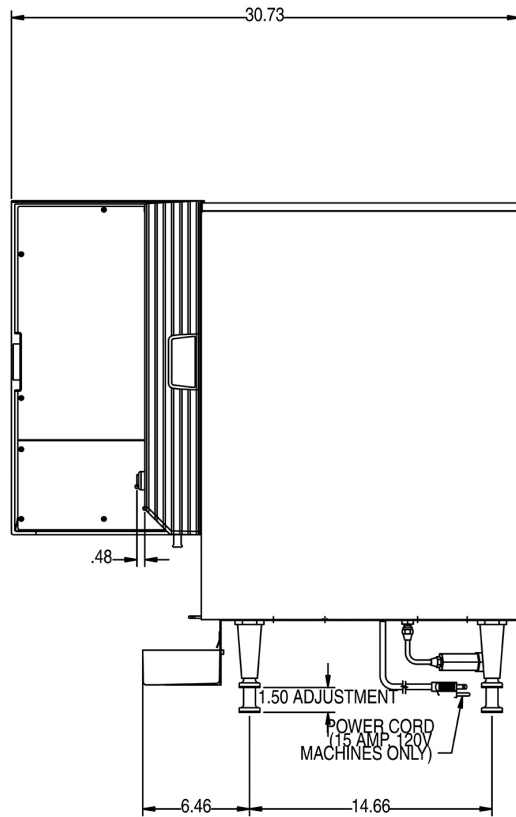
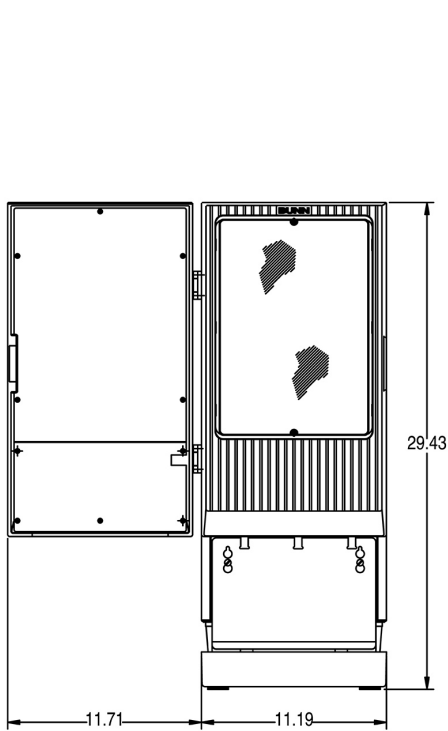
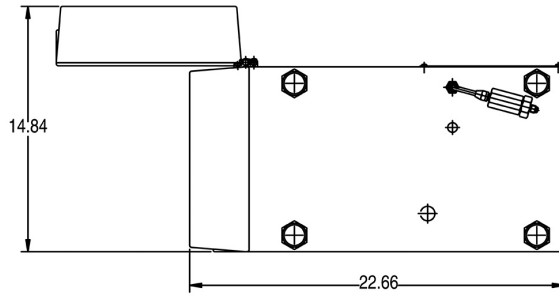
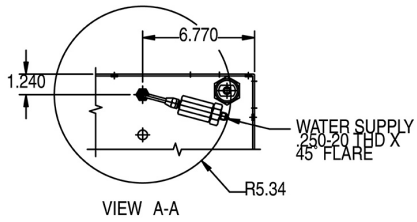
CAD Drawings

2D	Revit	KLC
●		



BUNN® reserves the right to change specifications and product design without notice. Such revisions do not entitle the buyer to corresponding changes, improvements, additions or replacements for previously purchased equipment. For most current specifications and other info visit bunn.com.

Created on:
01/23/2017



Unit			Shipping					
	Width	Height	Depth	Width	Height	Depth	Weight	Volume
English	11.3 in.	30.0 in.	23.3 in.	-	-	-	85.000 lbs	7.620 ft ³
Metric	28.7 cm	76.2 cm	59.2 cm	-	-	-	38.556 kgs	0.216 m ³



BUNN® reserves the right to change specifications and product design without notice. Such revisions do not entitle the buyer to corresponding changes, improvements, additions or replacements for previously purchased equipment. For most current specifications and other info visit bunn.com.

Created on:
01/23/2017

Related Products & Accessories:FMD DBC-3 BLK(29250.0000)



WATER FILTER,
EQHP-10L

Product #: 39000.0001



WATER FILTER,
EQHP-10

Product #: 39000.0004



BUNN® reserves the right to change specifications and product design without notice. Such revisions do not entitle the buyer to corresponding changes, improvements, additions or replacements for previously purchased equipment. For most current specifications and other info visit bunn.com.

Created on:
01/23/2017

Serving & Holding Options: FMD DBC-3 BLK(29250.0000)

Serving and Holding selections are currently unavailable. Please contact your sales representative to find out more information.



BUNN® reserves the right to change specifications and product design without notice. Such revisions do not entitle the buyer to corresponding changes, improvements, additions or replacements for previously purchased equipment. For most current specifications and other info visit bunn.com.

Created on:
01/23/2017