

## 3 Gallon Automatic Electric Coffee Urn

### Features

#### Automatic Electric Coffee Urn

- Brews 15 gallons (56.9 liters) of perfect coffee per hour.
- Three gallon (11.4 liters) coffee urn measuring only 14" wide fits most counters.
- Automatic drip brewing of delicious coffee every time.
- Large water tank—over 10 gallons (37.9 liters).
- Draw off hot water during brewing cycle without affecting delivery of coffee.
- All stainless steel construction.
- Can brew full or half batches.
- Top mounted components for ease of service.
- International electrical configurations available.



#### Model SRU

Dimensions: 33.5" H x 14" W x 24.6" D  
(85.1 cm H x 35.6 cm W x 62.5 cm D)

For current specification sheets and other information, go to [www.bunn.com](http://www.bunn.com).

### Related Products

**Easy Clear® EQHP-10**  
Product No. : 39000.0004

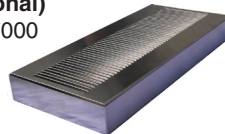


**Easy Clear® EQHP-10L**  
Product No. : 39000.0001

**U3 Paper Filters**  
Product No. : 20109.0000  
Packed per case: 250  
Dimensions:  
7" Base x 5¼" Sidewall  
17.78 cm Base x 13.34 cm Sidewall



**SRU Drip Tray (Optional)**  
Product No. : 06465.7000  
All Stainless Steel



**Easy Pour® black decanter**  
Product No. : 06100.0201  
Quantity: 1  
(also packaged in quantities of 3 & 24)



**Easy Pour® orange decanter (for decaf)**  
Product No. : 06101.0201  
Quantity: 1  
(also packaged in quantities of 3 & 24)



**Model**

SRU

**Agency Listing**



# Dimensions & Specifications



Model	Product #	Volts	Amps	Tank Htr Watts	Total Watts	Capacity per hour	Cubic ft <sup>3</sup> /m <sup>3</sup>	Weight lbs/kg	Cord Attached
SRU S/S	06325.6000	120/208	28.8	6000	6075	15.0 gal /56.9 liter	8.3 /.23	71 / 32.2	No
SRU S/S	06325.6004	120/240	25.0	6000	6075	15.0 gal /56.9liter	8.3 /.23	71 / 32.2	No

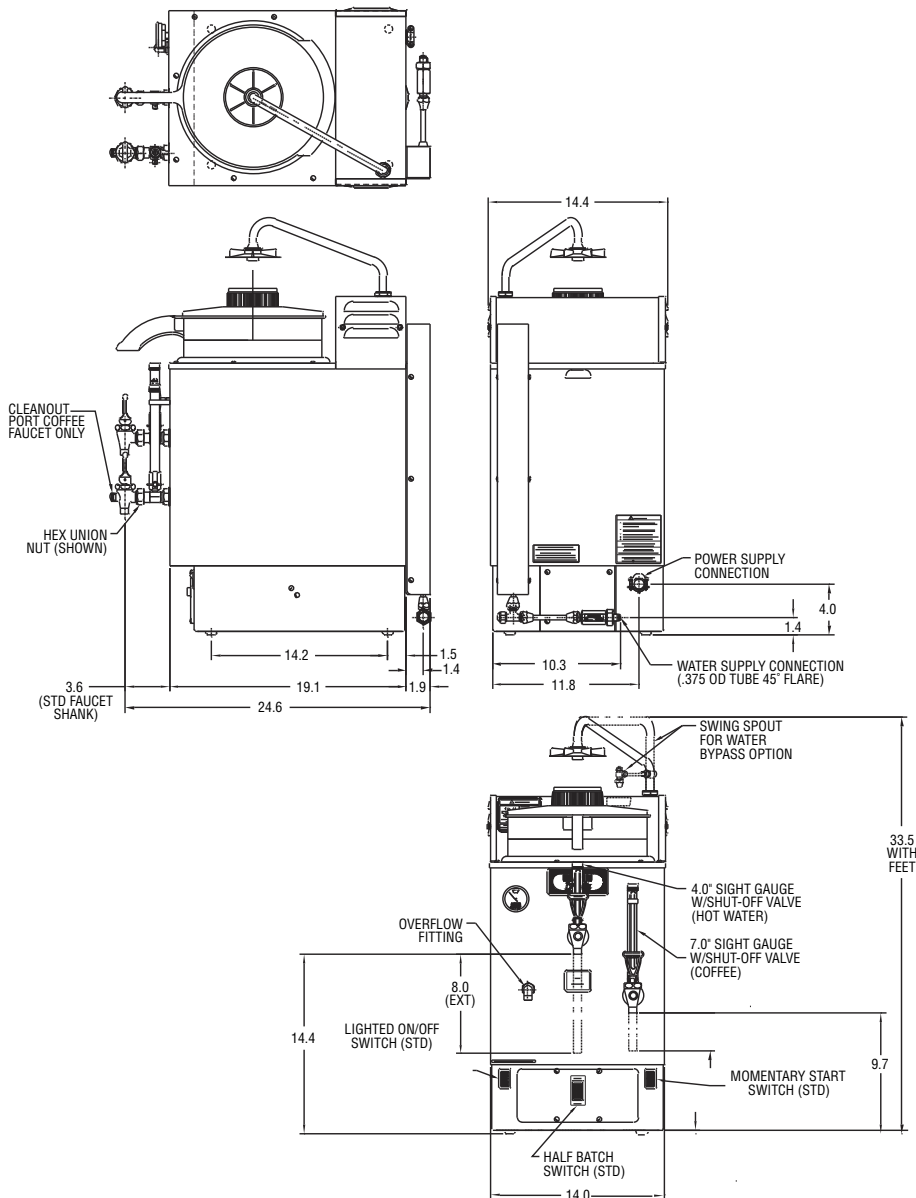
**Note:** S/S = Single Service, taps on front of the machine.

Brewing capacity: based upon incoming water temp of 60°F (140°F rise).

Models listed as 120/208V or 120/240V must be connected to 208V or 240V electrical service respectively. Please refer to the installation manual.

Electrical: Models require 3-wires plus ground service, single phase, 60 Hz.

Plumbing: 20-90 psi (138-621 kPa). Supplied with 3/8" OD male flare fitting.



Bunn-O-Matic Corporation of Canada - 280 Industrial Pkwy. S. Aurora, Ontario L4G 3T9 • 905-841-2866 • Fax 905-841-2775 • www.bunn.com

BUNN® practices continuous product research and improvement. We reserve the right to change specifications and product design without notice. Such revisions do not entitle the buyer to corresponding changes, improvements, additions or replacements for previously purchased equipment.

All dimensions shown in inches. Bunn Corporation owns all copyrights relating to materials in this publication. Please contact Bunn Corporation to request permission to reproduce any portion of this publication.